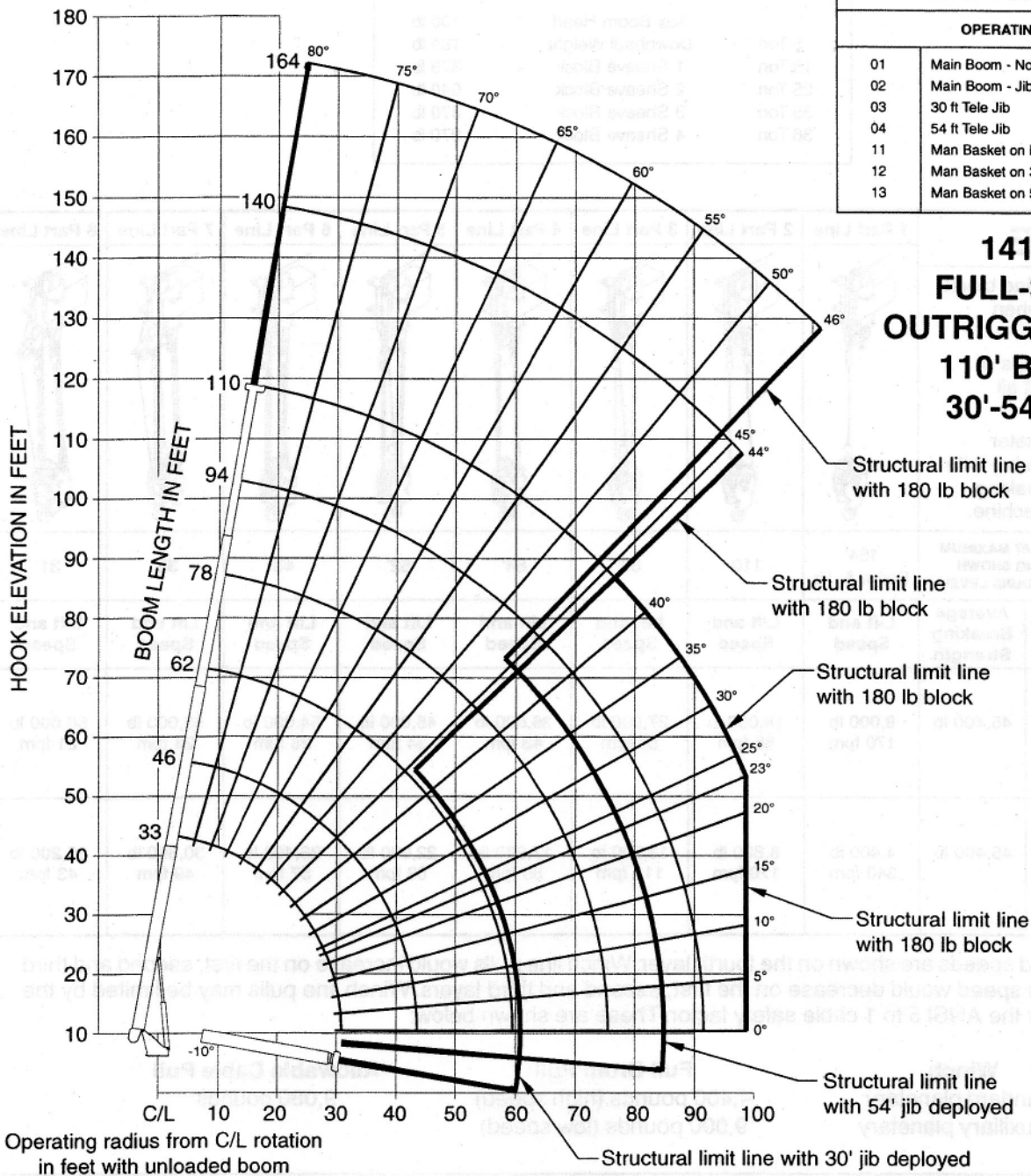


**LMI OPERATING CODE**

**OPERATING MODE**

01	Main Boom - No jib Stowed
02	Main Boom - Jib Stowed
03	30 ft Tele Jib
04	54 ft Tele Jib
11	Man Basket on Main Boom
12	Man Basket on 30 ft Tele Jib
13	Man Basket on 54 ft Tele Jib

**14110  
FULL-SPAN  
OUTRIGGER 24'6"  
110' BOOM  
30'-54' JIB**



**SET-UP**

1. Fully extend and set outriggers to full-span location, level crane and set front stabilizer.

**OPERATION**

1. The 33 ft. boom length capacities are based on boom fully retracted. If not fully retracted, do not exceed 46 ft. boom length capacities.
2. Do not extend unloaded boom or jib beyond stability limit line on range chart as loss of stability may occur.
3. Load blocks and slings are considered to be a part of the load.
4. Operate with jib by radius when main boom is fully extended and by boom angle when main boom is partially extended. Do not exceed jib capacities at any partially extended boom length.
5. All jib loads must be lifted with single part reeving.

**FIGURE B**