

# V60 HIREACH

**ELLIOTT**  
EQUIPMENT COMPANY  
**Built for You.**

## KEY FEATURES

- 1 Telescopic three-section boom with smooth 'point and shoot' functionality
- 2 Narrow outriggers allow full setup in as little as an 8' wide space
- 3 Top-mounted two-person steel work platform
- 4 Dynasmooth controls for smooth and precise operation
- 5 Full length subframe with hydraulic outriggers for excellent stability

## TECHNICAL SPECS

WORKING HEIGHT	63' / 19,2 m
SIDE REACH	38' / 11,6 m
PLATFORM CAPACITY	500 lbs / 227 kg
PLATFORM SIZE	30" x 40" / 76 x 102 cm
JIB WINCH CAPACITY	500 lbs / 227 kg
FRONT OUTRIGGER SPREAD	8' / 2,4 m
REAR OUTRIGGER SPREAD	8' / 2,4 m
MINIMUM GVWR	19,500 lbs / 8845 kg



### Advanced Control System

Smooth and precise upper controls with an integrated tool tray and cupholder



### Material Handling Jib Winch

Elliott's platform stowable 500 lb. jib winch lets you handle materials to maximize the return on your investment



### Narrow Outrigger Spread

An 8 foot spread provides full 360 degree operation, allowing setup in areas as tight as a single parking stall



### Compact and Versatile Design

Engineered to be installed on a 19,500 lb GVWR truck with plenty of room for toolboxes and storage



## FEATURES

**Work Platform:** Electronic self-leveling and rotating steel 30" x 40" top-mounted work platform. Features 180 degrees of rotation. Includes upper control station with multi-joystick controls.

**Hydraulic System:** Hydraulically powered continuous rotation mechanism. Holding valves on all cylinders. 12V Emergency pump.

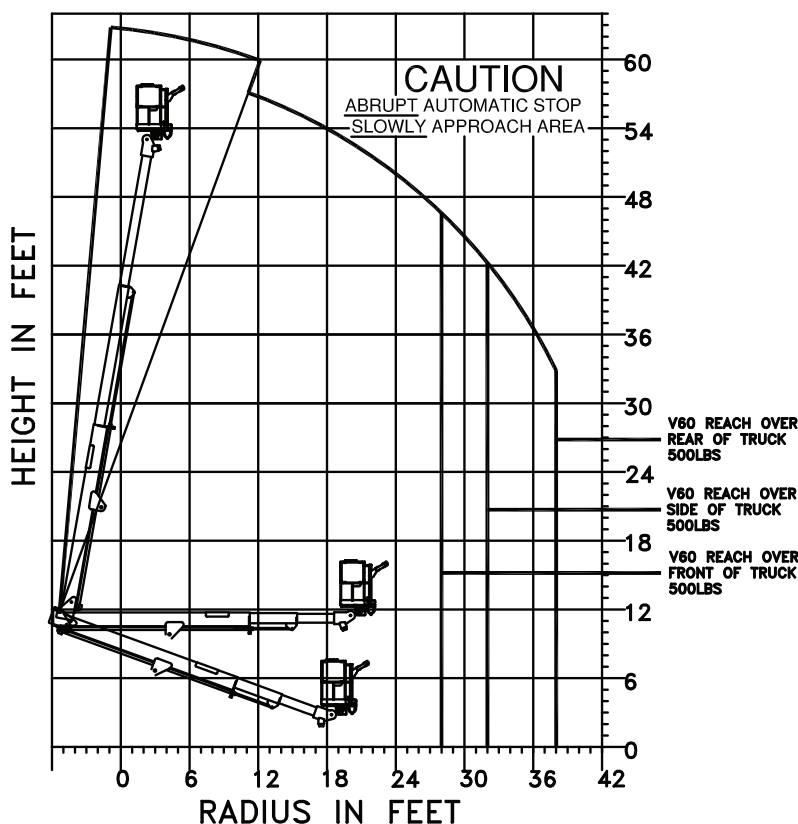
**Control System:** Control switch console mounted to turret. Three proportional electric joysticks mounted in platform provide boom extension, lift and rotation. Proportional paddles provide platform rotation, enabling, manual leveling, engine speed, engine start/stop, emergency stop and optional jib winch.

**Outriggers:** "A" type hydraulically powered front and rear outriggers with 8' spread. Outrigger controls at ground level. 360 degree stability.

**Certification:** Certified to ANSI A92.2 for Vehicle-Mounted Elevating and Rotating Aerial Devices.

*\*Specifications are subject to change.*

## TOTAL PLATFORM CAPACITY 500LBS JIB LOAD PLUS PERSONNEL



USE OUTRIGGERS  
AT ALL TIMES

AVOID JERKING  
LOADS

## AVAILABLE OPTIONS

500 lb. Capacity Stowable Jib Winch in the Work Platform

110V Line to the Work Platform

(2) Sign Forks on Work Platform

Cold Climate Hydraulic Oil Heater

Access Step Cutout in Bed

Steel, Wood or Aluminum Flatbeds

Steel, Aluminum or Fiberglass Service Bodies

Steel or Aluminum Toolboxes

Composite or Wooden Outrigger Pads

Spanish/Metric Charts

Painted White, Red or Custom Colors

Much More...