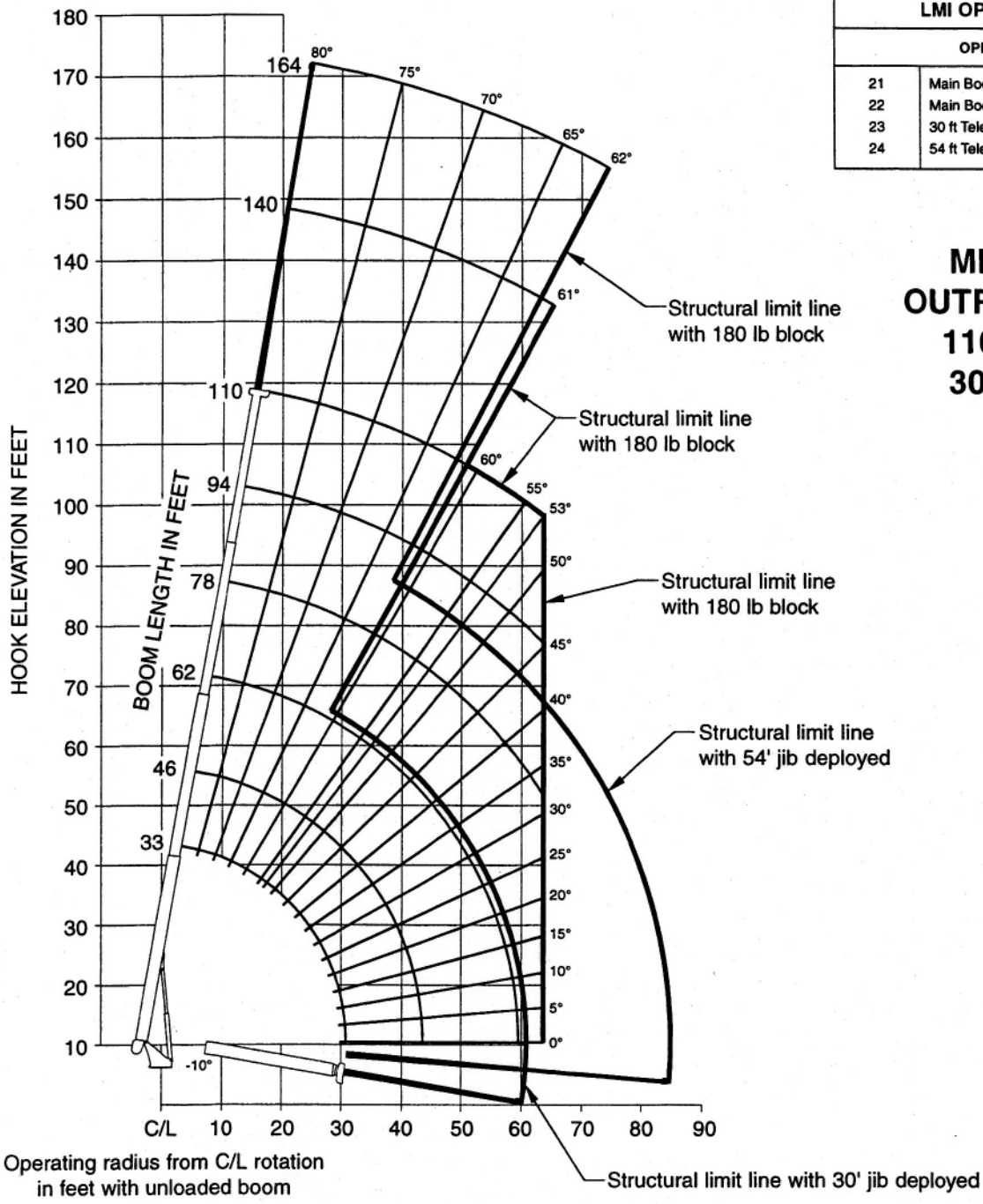


LMI OPERATING CODE

OPERATING MODE

21	Main Boom - No jib Stowed
22	Main Boom - Jib Stowed
23	30 ft Tele Jib
24	54 ft Tele Jib

**14110
MID-SPAN
OUTRIGGER 17'
110' BOOM
30'-54' JIB**



SET-UP

1. Engage mid-span outrigger lock pins, extend and set outriggers to mid-span location, level crane and set front stabilizer.

OPERATION

1. The 33 ft. boom length capacities are based on boom fully retracted. If not fully retracted, do not exceed 46 ft. boom length capacities.
2. Do not extend unloaded boom or jib beyond stability limit line on range chart as loss of stability may occur.
3. Load blocks and slings are considered to be a part of the load.
4. Operate with jib by radius when main boom is fully extended and by boom angle when main boom is partially extended. Do not exceed jib capacities at any partially extended boom length.
5. All jib loads must be lifted with single part reeving.