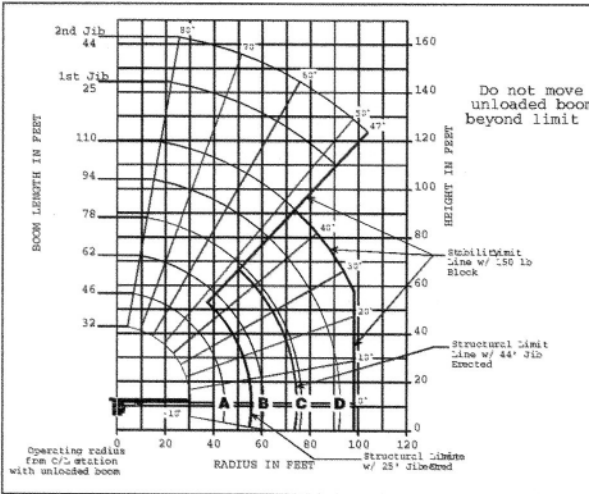


capacities

Load Chart Rating: Series 13110A (33.5 m) Boom with 25-44 ft (7.62 m-13.4 m) Jib / Full-Span Outrigger 20 ft (6.0 m)

National Crane will send you a chart on request - or you may secure needed load rating information through your nearest National Crane dealer.



CAUTION:

- Do not operate crane booms, jib extensions, any accessories or loads within 10 ft (3m) of live power lines or other conductors of electricity.
- Jib and boom capacities shown are maximum for each section.
- Do not exceed capacities at reduced radii.
- Load ratings shown on the appropriate charts are maximum allowable loads with the crane mounted on a factory-approved truck and all outriggers at either full span or at mid span range and set on a firm level surface so that the crane is level and all tires are suspended.
- Always level the crane with the level indicator located on the crane.
- The operator must reduce load to allow for factors such as wind, ground conditions, operating speeds and their effects on freely suspended loads.
- Overloading this crane may cause structural collapse or instability.
- Weights on any accessories attached to the boom or loadline must be deducted from the load chart capacities.
- Do not exceed jib capabilities at any reduced boom lengths.
- Do not deadhead lineblock against boom tip when extending boom or winching up.
- Keep at least three wraps of loadline on drum at all times.
- Use only specified cable with this machine.

**SERIES 13110A
WITH
25-44 ft JIB /
FULL-SPAN
OUTRIGGER 20 ft**

NOTE:

- Operate with jib by radius when main boom is fully extended. If necessary increase boom angle to maintain loaded radius.
- Operate with jib by boom angle when main boom is not fully extended. Do not exceed rated jib capacities at any reduced boom lengths.

LOADLINE EQUIPMENT DEDUCT

Downhaul weight.....150 lb (68 kg)
One sheave block266 lb (120 kg)
Two sheave block.....350 lb (159 kg)
Three sheave block.....575 lb (261 kg)

Load Chart Rating: Series 13110A (33.5 m) Boom with 25 ft-44 ft (7.62 m-13.4 m) Jib / Full-Span Outrigger 20 ft (6.0 m)

32 ft - 110 ft BOOM RATED LOADS WITHOUT JIB

LOADED RADIUS (ft)	LOADED BOOM ANGLE (deg)	32 ft BOOM (ft)	A 46 ft BOOM (ft)	B 62 ft BOOM (ft)	C 78 ft BOOM (ft)	D 94 ft BOOM (ft)	110 ft BOOM (ft)
5	78.5	60,000					
8	74.5	43,000					
10	70.5	35,900	77.5	29,100			
12	66.5	30,900	75	26,900			
15	60	25,500	71	24,000	77	23,000	
20	48.5	19,450	63.5	18,450	72	17,550	77
25	34	14,900	56	14,800	67	14,100	73
30			48	12,150	61.5	11,650	69
35			38.5	9,600	56	9,850	64.5
40			27	7,600	49.5	7,950	60.5
45				43.5	6,350	56	6,600
50				36	5,100	51.5	5,350
55				26	4,050	46	4,300
60				8.5	2,650	40	3,500
65						33.5	2,850
70						25.5	2,250
75						13	1,750
80							32
85							25
90							15
95							
100							
0		6,300	0	3,250	0	1,450	0

25 - 44 ft JIB RATED LOADS				
LOADED RADIUS (ft)	LOADED BOOM ANGLE (deg)	25 ft JIB (ft)	LOADED BOOM ANGLE (deg)	44 ft JIB (ft)
35	76.5	4,200		
40	75	4,100	76.5	2,900
45	73	4,000	75.5	2,900
50	71	3,850	74	2,900
55	69	3,600	72.5	2,900
60	66.5	3,300	70.5	2,900
65	64	3,050	68.5	2,250
70	61.5	2,500	66.5	2,150
75	59	2,000	64.5	2,050
80	56	1,550	62	1,900
85	53.5	1,100	60	1,800
90	50.5	700	57	1,400
95			54.5	1,050
100			51.5	650
105				

*SHADED AREAS ARE STRUCTURALLY LIMITED CAPACITIES

BOOM LENGTH (ft)	25 - 44 ft JIB STOWED
29	Reduce load 800 lb
44	Reduce load 600 lb
58	Reduce load 450 lb
72	Reduce load 350 lb
86	Reduce load 300 lb
100	Reduce load 250 lb

RATED LOAD REDUCTIONS WITH STOWED JIB

Note:

- All capacities are in pounds, angles in degrees, and radii in feet.
- Loaded boom angles are given as reference only.
- Shaded areas are structurally limited capacities.
- Handling of personnel is only permitted with full span extension of all outrigger and stabilizer beams.
- See owners manuals. The 60,000 lb load requires optional 9/16" diameter 6x25 IWRC cable.

THIS CHART IS ONLY A GUIDE AND SHOULD NOT BE USED TO OPERATE THE CRANE. The individual crane's load chart, operating instructions and other instructional plates must be read and understood prior to operating the crane.