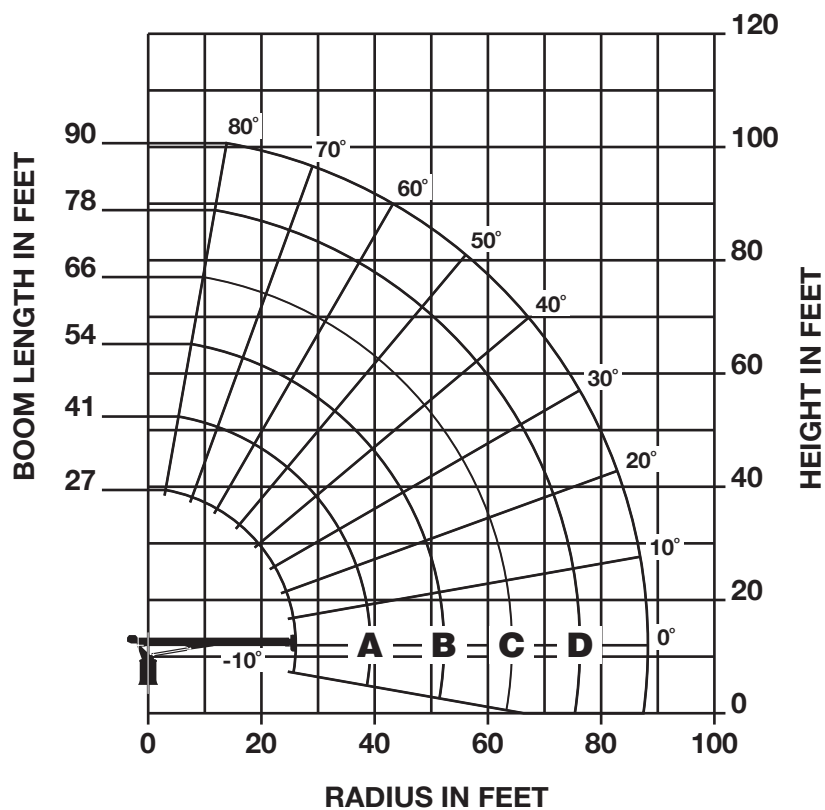


# NATIONAL CRANE CORPORATION

7679100470

## SERIES 690E2 WITH NO JIB



**NOTE:**

1. Capacities do not exceed 85% stability.
2. Shaded areas are structurally limited capacities.

### LOADLINE EQUIPMENT DEDUCT (lb)

Downhaul weight ..... 150  
One sheave block ..... 200  
Two sheave block ..... 355

## LOAD RATINGS

LOADED RADIUS (FT)	LOADED BOOM ANGLE (DEG)	27 FT BOOM (LB)	LOADED BOOM ANGLE (DEG)	A 41 FT BOOM (LB)	LOADED BOOM ANGLE (DEG)	B 54 FT BOOM (LB)	LOADED BOOM ANGLE (DEG)	C 66 FT BOOM (LB)	LOADED BOOM ANGLE (DEG)	D 78 FT BOOM (LB)	LOADED BOOM ANGLE (DEG)	90 FT BOOM (LB)
5	77	40,000										
8	70	25,750										
10	66	21,400	74	20,950								
12	61.5	18,450	71	17,750	76	17,000						
14	57	16,400	68	15,250	74	15,000	77.5	14,450				
16	51	14,750	65.5	13,300	71.5	13,200	75.5	12,600				
20	40	11,250	58.5	10,800	67.5	10,500	72	9,950	76	9,700	77.5	7,850
25	19	7,500	50	9,050	61.5	8,150	67	7,900	71.5	7,750	74.5	7,550
30			40	7,550	55	6,750	62.5	6,450	68	6,250	71.5	6,150
35			26.5	5,250	48	5,700	58	5,450	63.5	5,200	68	5,050
40					40	4,600	52	4,550	59.5	4,400	64.5	4,200
45					32	3,850	46.5	3,850	54.5	3,700	61	3,550
50					16.5	2,450	39.5	3,150	50	3,150	57	3,000
55							31	2,550	44.5	2,650	53.0	2,550
60							21.5	1,800	39.5	2,250	48.5	2,150
65									32.5	1,750	44	1,850
70									24	1,250	39	1,500
75									11	450	33	1,150
80											26.5	800
	0	4,150	0	1,950	0	850						

**1 PART LINE**



MAX PULL  
7,700 lb

**2 PART LINE**



MAX PULL  
15,400 lb

**3 PART LINE**



MAX PULL  
23,100 lb

**4 PART LINE**



MAX PULL  
30,800 lb

**5 PART LINE**



MAX PULL  
38,500 lb

**6 PART LINE**



MAX PULL  
40,000 lb

## NOTICE

- Do not deadhead line block against boom tip when extending boom.
- Keep at least 3 wraps of loadline on drum at all times.
- Use only 9/16" diameter rotation resistant cable with 38,500 lb breaking strength on this machine.