

# 1300A

**preliminary  
product  
guide**

## features

- 100' Four-Section Boom
- Ergonomic Visioncab
- 30 Ton Rating
- HO Style Outriggers
- CANBUS electronics
- Radio ATB system

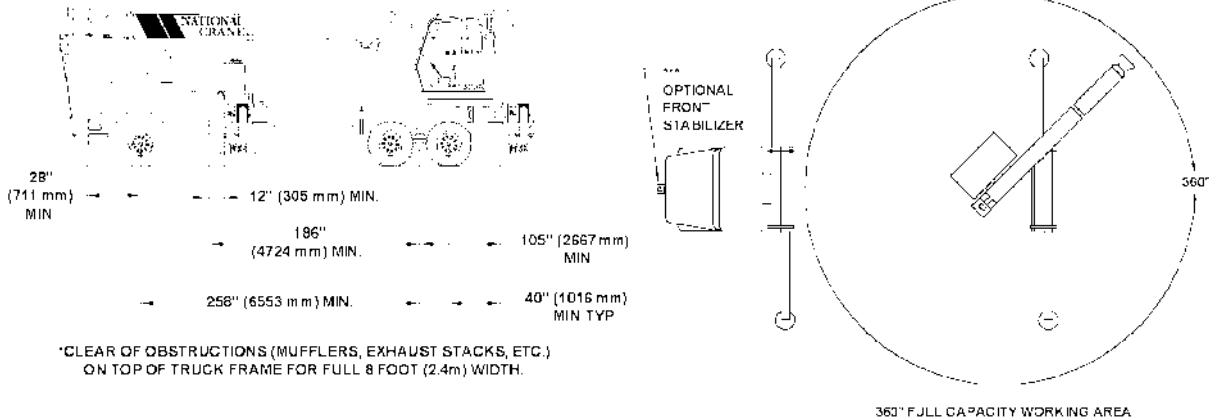


\*Product may be shown with optional equipment.

# capacities

## 1300A Truck Requirements

2



The mounting configuration shown is based on an 85% stability factor. The complete unit must be installed on the truck in accordance with factory requirements, and a test performed to determine actual stability and counterweight requirements, since individual truck chassis vary. If bare truck weights are not met, counterweight will be required. A summary of mounting and truck requirements are:

Working area  
360°

Gross Axle Weight Rating (GAWR),  
front 18,000 lb (8165 kg)

Gross Axle Weight Rating (GAWR),  
rear 34,000 lb (15 455 kg)

Gross Vehicle Weight Rating  
52,000 lb (23 587 kg)

Wheelbase (WB)  
258 in (6.55 m)

Cab to Axle/Trunnion (CT)  
186-in (4724mm);

After Frame (AF)  
105-in (2667mm) minimum

Frame Section Modulus (SM), front axle to end of afterframe: 110,000 psi (759 MPa) 20-in<sup>3</sup> (327-cm<sup>3</sup>) See "Truck Frame Strength" section.

Estimated bare chassis weight required for stability prior to installation of crane or accessories:

Front 9,000 lb (4082 kg)  
Rear 8,500 lb (3856 kg) \*  
10,000 lb (4536 kg) with optional bed

Front Axle Maximum Weight\*\*  
10,500 lbs (4763 kg)

\*10,000 lb (4536 kg) is required at the rear axle for 360° stability. This weight does include the weight of the optional bed. Counterweight will be required above the 8500 lb (3856 kg) minimum bare chassis if the

optional bed is not used to attain the 10,000 lb (4536 kg) stability weight.

\*\*Weight in excess of 10,500 lb (4763 kg) will require the addition of a front stabilizer or additional rear axle stability weight for over front stability. One-half of the front axle weight in excess of the maximum at the rear axle will maintain stability.

Example: A 11,000 lb (4990 kg) Bare Front Axle will maintain stability if the rear axle bare is 8750 lb (3969 kg) and 10,250 lb (4649 kg) with the additional optional bed weight.

\*\*\*A single front stabilizer is not necessary for 360° stability if mounting dimensions are maintained and minimum rear axle and maximum front axle weights are not exceeded.

NOTE 1: Gross Vehicle Weight Rating (GVWR) is dependent on all components of the vehicle (axles, tires, springs, frame, etc.) meeting manufacturers' recommendations; always specify GVWR when purchasing trucks.

NOTE 2: Diesel engines require a variable speed governor and energize-to-run fuel solenoid for smooth crane operation; electronic fuel injection is required.

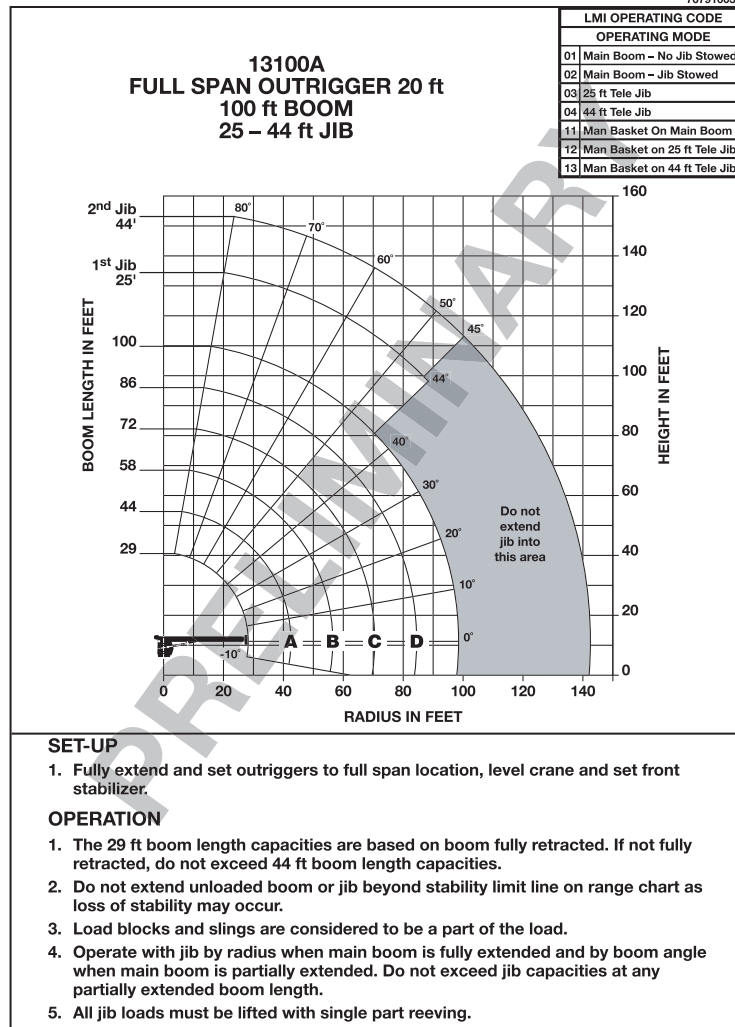
NOTE 3: All mounting data is based on a National Series 1300A with subbase and an 85 percent stability factor.

NOTE 4: The complete unit must be installed in accordance with factory requirements, and a test performed to determine actual stability and counterweight requirements; contact the factory for details.

NOTE 5: Transmission neutral safety interlock switch is required.

1300A

## Load Rating Chart: 13100A Full-Span Outriggers



3

## Load Rating: 13100A

LOADED RADIUS (FT)	LOADED BOOM ANGLE (DEG)	29 FT BOOM (LB)	LOADED BOOM ANGLE (DEG)	A 44 FT BOOM (LB)	LOADED BOOM ANGLE (DEG)	B 58 FT BOOM (LB)	LOADED BOOM ANGLE (DEG)	C 72 FT BOOM (LB)	LOADED BOOM ANGLE (DEG)	D 86 FT BOOM (LB)	LOADED BOOM ANGLE (DEG)	100 FT BOOM (LB)	LOADED BOOM ANGLE (DEG)	25 FT JIB (LB)	LOADED BOOM ANGLE (DEG)	44 FT JIB (LB)	
5	79.5	60,000															
8	73.0	44,000	79.0	29,100													
10	68.5	36,900	76.5	29,000													
12	64.0	31,900	74.0	28,600	79.0	28,600											
15	57.0	26,400	69.5	24,600	75.5	23,500	79.5	22,900									
20	43.5	20,100	62.5	19,000	70.5	18,050	75.5	17,450	79.0	16,300	80.5	10,650					
25	25.5	14,800	54.5	15,350	65.0	14,600	71.0	14,050	75.5	13,700	77.5	10,450					
30			45.5	12,300	59.0	12,150	66.5	11,700	71.5	11,350	75.0	10,000	80.0	5,100			
35			34.5	9,700	53.0	10,000	62.0	9,900	68.0	9,600	72.0	9,400	78.0	5,100	79.5	2,800	
40			19.0	7,700	46.0	8,050	57.0	8,300	64.0	8,250	69.0	8,050	76.0	4,950	78.0	2,650	
45					39.0	6,500	52.5	6,700	60.5	6,900	66.0	7,000	73.5	4,450	76.0	2,600	
50					29.5	5,200	47.0	5,450	56.5	5,600	62.5	5,750	71.0	4,150	74.5	2,500	
55					14.5	4,200	40.5	4,400	52.0	4,600	59.0	4,750	69.0	3,850	72.5	2,500	
60							33.5	3,600	47.5	3,800	55.5	3,900	66.0	3,550	70.5	2,350	
65							24.5	2,950	42.0	3,100	51.5	3,250	63.5	3,300	68.5	2,250	
70							8.0	2,100	36.5	2,550	47.5	2,700	61.0	2,800	66.5	2,150	
75									29.5	2,100	43.0	2,200	58.0	2,250	64.0	2,050	
80									20.5	1,650	38.5	1,800	54.5	1,750	62.0	1,950	
85											33.0	1,450	51.5	1,400	59.5	1,850	
90												26.5	1,100	47.5	1,000	57.0	1,650
95												17.5	800	44.0	700	54.5	1,350
100															52.0	1,100	
105															49.0	850	
110															45.0	550	
115																	
120																	
0		7,900	0	4,100	0	2,250	0	1,100									
<b>SUBTRACT FROM CAPACITIES WHEN JIB STOWED (LB)</b>		800		600		450		350		300		250					

1300A



**Manitowoc Crane Group - Americas**

Manitowoc, Wisconsin Facility  
Tel: [Int + 001] 920 684 6621  
Fax: [Int + 001] 920 683 6277  
Shady Grove, Pennsylvania Facility  
Tel: [Int + 001] 717 597 8121  
Fax: [Int + 001] 717 597 4062

**Manitowoc Crane Group - EMEA**

Europe Middle East & Africa  
Tel: [Int + 33] (0) 191 565 6281  
Fax: [Int + 33] (0) 4 72 18 20 20

**Manitowoc Crane Group - UK**

Europe Middle East & Africa  
Tel: [Int + 44] (0) 191 565 6281  
Fax: [Int + 44] (0) 191 564 0442

**Manitowoc Crane Group - Germany**

(Sales, Parts & Service)  
Tel: [Int + 49](0) 2173 8909 0  
Fax: [Int + 49] (0) 2173 8909-30

**Manitowoc Crane Group - France**

France & Africa (Sales, Parts & Service)  
Tel: [Int + 33] (0) 1 303 13150  
Fax: [Int + 33] (0) 1 303 86085

**Manitowoc Crane Group - Netherlands**

(Sales, Parts & Service)  
Tel: [Int + 31] (0) 76 578 39 99  
Fax: [Int + 31] (0) 76 578 39 78

**Manitowoc Crane Group - Italy**

Italy & Southern Europe (Sales, Parts & Service)  
Tel: [Int + 39] (0) 331 49 33 11  
Fax: [Int + 39] (0) 331 49 33 30

**Manitowoc Crane Group - Portugal**

Portugal & Spain (Sales, Parts & Service)  
Tel: [Int + 351] (0) 22 968 08 89  
Fax: [Int + 351] (0) 22 968 08 97

**Manitowoc Crane Group - Singapore**

Asia/Pacific excl China (Sales, Parts & Service)  
Tel: [Int + 65] 6861 1733  
Fax: [Int + 65] 6862 4040 / 4142

**Manitowoc Crane Group - Shanghai**

China (Sales, Parts & Service)  
Tel: [Int + 86] (0) 21 64955555  
Fax: [Int + 86] (0) 2164852038

**Manitowoc Crane Group - Beijing**

China (Sales, Parts & Service)  
Tel: [Int + 86] (0) 10 646 71690  
Fax: [Int + 86] (0) 10 646 71691

**Manitowoc Crane Group - Middle East**

Sales  
Tel: [Int + 971] (0) 4 348 4478  
Fax: [Int + 971] (0) 4 348 4478  
(Parts & Service)  
Tel: [Int + 973] (0) 9 660 899  
Fax: [Int + 973] (0) 2 707 740

**Distributed By:**



[www.manitowoccrane.com](http://www.manitowoccrane.com)

Constant improvement and engineering progress make it necessary that we reserve the right to make specification, equipment, and price changes without notice. Illustrations shown may include optional equipment and accessories, and may not include all standard equipment.